



## FEATURED ARTIST JEFF HARGREAVES

Representational painting is how I prefer to connect to my viewer. My paintings are views of tangible things represented as eloquently as I can. If I can hit upon some common ground, I think that's how you connect.

When I see works by some of the world's best painters, I understand a lot more is being done than representing the subject. I don't think it's about painting virtuosity or how complex it is. I think it's about an idea

*Grandfather's Time, 20" x 24" oil on linen*

supported by some kind of plan. It's necessary to know where you are going and how to get there.

I work in oils because I like its richness, depth and flexibility. The different ways you can work the paint are like different tools. Each one is available to help me get where I want to go.

More on page 9



## WVA EVENTS

### South East Chapter Meetings

- November 4, 6-8pm Speaker: Sally Dubak, Printmaker, sculptor, papermaker  
1350 14th Avenue Grafton
- December 2, 2009 6-8pm  
December Get Together

### Northeast Chapter Meetings

### South Central Chapter Meetings

- November 17, 2009 7-9 pm
- SC winter party, December 15, 7-9 pm  
Lee Weiss home
- January 19, 2010 7-9 pm

### • COME WHAT MAY

January 11 - March 5, 2010  
South Central Chapter, Wisconsin Visual Artists - Group Show  
Wisconsin Arts Board - Dept. of Administration Building, 101 E Wilson St., Madison, WI

### • WVA SE Chapter Exhibition

October 31 - December 4  
Reuss Federal Plaza, First Floor Gallery  
October 30-December 4

### • WVA SE Chapter Exhibit

February 5 - March 15, 2010  
Schauer Arts and Activities Center, Suckow Family Art Gallery 147 N Rural St, Hartford, WI 53027

### • WVA SE Chapter Exhibition

April 17 - May 29, 2010  
WVA SE Chapter member exhibition to take place at St. John's on the Lake, Uihlein Peters Gallery  
1840 North Prospect Ave, Milwaukee, WI 53202  
414-831-7300

## AVOIDING BAD BETS AND THE DANE COUNTY CULTURAL AFFAIRS COMMISSION

By Doug E. L. Haynes

Whenever one enters a show, there is a mental equation to be calculated. Is the potential prize money and prestige of acceptance in line with the entry fee? One might also factor in the ferocity of the competition, who the juror is and what their tastes might be. Finally one might weigh one's past experience with a particular show.

This year I was particularly disappointed to see that the Dane County Cultural Affairs Commission was asking for a \$25 entry fee in its competition for their annual calendar. 13 prizes of \$100 for images accepted in the calendar images seems like a pitiful compensation for such a hefty entry fee. If I were at Ho Chunk and a \$25 bet on the slots paid \$100, I would not be playing that one too often. I suppose that the Cultural Affairs Commission is hoping that artists will be lured by the wide distribution of the calendar, but "exposure" is the same lame excuse that every coffee shop "venue" uses to get free use of art. One would hope that a government entity whose mission is advancing the art of the region would have a stronger vision.

Other competitions to be wary of are those that culminate in an online exhibit. Or those in which you have already been juried in on the strength of your website (i.e. the Florence Biennale) I would also be cautious of the first annual of any type of event as sometimes it takes a few years to work the bugs out.

No competition should be a sure thing, so it makes sense to have a tough skin for rejection. At the same time an honest appraisal of the odds is worthwhile and if no one speaks out about a bad bet, the organizers of such events will take that as a ratification of their wisdom in charging excessive fees or putting on half-baked events.

## WISCONSIN EMERGING ARTS LEADERS NETWORK

Wisconsin Emerging Arts Leaders Network is a day long conference focused on Social media – what to do with it - what it means for the arts, and for work and life. This conference will take place on Thursday, December 3, 2009 from 9:00 am - 4:00 pm at the Wayne & Kristine Lueders Florentine Opera Center, 926 East Burleigh Street, Milwaukee. More information can be found at [www.artswisconsin.org/ourservices/cc12-3-2009.cfm](http://www.artswisconsin.org/ourservices/cc12-3-2009.cfm)

Wisconsin Emerging Arts Leaders Network is presented by: Arts Wisconsin, Cultural Alliance of Greater Milwaukee, and Milwaukee Artists Resource Network, with support from the Florentine Opera Company, Wisconsin Arts Board, National Endowment for the Arts, and Americans for the Arts

Expect plenty of interesting speakers, energizing discussions, fun art-making, and scintillating conversation.

## ONLINE RESOURCES:

- This publication, Wisconsin Visual Artists Magazine, is available on line at [www.wisconsinvisualartists.com](http://www.wisconsinvisualartists.com), with the current issue and Feature Article archives.
  - The Side by Side shows at the Wisconsin Academy's Steenbock Gallery in Madison are also available, on line at [www.GalleryWisconsin.com](http://www.GalleryWisconsin.com).
  - The Wisconsin Visual Arts Lifetime Achievement Award winners are profiled at [www.wvalaa.com](http://www.wvalaa.com).
- Learn about Wisconsin's rich visual arts history and use the educational resources for students and teachers.

## FOR SALE OR RENT WITH OPTION TO BUY

: Beautifully maintained 3bd, 2b house and studio on triple lot in Port Aransas, Texas off the coast of Corpus Christi, two blocks from Gulf of Mexico. House is furnished with everything needed to turn the key and enjoy it. Includes sunporch, upstairs deck and sitting room with bar, office, 2 car garage with shower, fenced yard. Separate studio with covered patio and garage door opening to alley for bringing or taking big art pieces. Excellent school system. For more information call Pt Holt at 608-836-5998.

## ADVERTISE

Find rates at

[www.wisconsinvisualartists.com](http://www.wisconsinvisualartists.com)

## SUBSCRIBE

Wisconsin Visual Artists Magazine is published 4 times per year The annual subscription rate for non-members is \$20.00. To subscribe send a check payable to WVA to  
Doug Haynes  
1008 Emerald St.- Madison, WI 53715

## CONTACT

This publication is edited by  
Doug Haynes -  
[aiw@emeraldstudio.com](mailto:aiw@emeraldstudio.com)  
608.255.0201

## GET INFO TO US

Members and venues may post events, exhibits and opportunities on our site. [www.wisconsinvisualartists.com](http://www.wisconsinvisualartists.com)  
To do so, click the login link at the lower left of any page. The same link will lead to links to recover a password or username and a registration page for venues.

Post info one month prior to the issue date; i.e., Sept. 1 for the October issue.

## CONTEMPORARY VISUAL ART IN WISCONSIN, A PANEL DISCUSSION

Artists participating in the Fall cycle of exhibits in Overture Center for the Arts in Madison will be participating in a panel discussion on contemporary visual art in Wisconsin. The event will take place Friday Nov. 13 at 7 pm in the Wisconsin Studio on the 3rd floor of Overture Center for the Arts. The discussion will be moderated by Gary John Gresl, former president of Wisconsin Visual artists, Founder of the Wisconsin Visual Art Lifetime Achievement Awards and noted artist. Participating artists include: Aaron Wilbers, Rene Graeff, Doug E. L. Haynes, Miriam Hall and Justin Nolan. The panelists will be discussing questions such as:

- What do you see as current trends in Wisconsin visual art?
- How important is community for our profession?
- How would you define the art of our region?
- What do you see for the future of artmaking in Wisconsin?

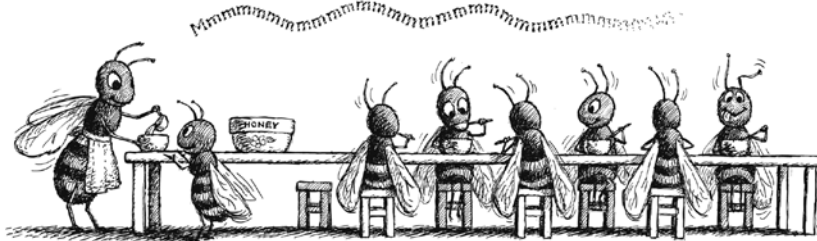
The work of panelists will be on view in the Overture Galleries and in the Watrous Gallery. The Fall Cycle of Exhibits includes the following shows in Overture's community galleries: Miriam Hall & Justin Nolan, *The Known and the Unknown*; Aaron Wilbers & Doug Haynes, *Oil & Water Mixed* and Dave Beck & Piper Vollmer, *Interior Plot*. Those shows have a reception on Saturday December 5, 6-8pm and will be on view until January 3, 2010. The Fine Art of Children's Book Illustration will be in the Watrous gallery until December 6th.



*Orchid in Sphere, Doug E. L. Haynes, watercolor  
69" x 51"*

## THE FINE ART OF CHILDREN'S BOOK ILLUSTRATION

The Fine Art of Children's Book Illustration presents the work of several of Wisconsin's most accomplished illustrators of children's books: Nancy Ekholm Burkert, Laura Dronzek, Renée Graef, Lois Ehlert, Kevin Henkes, David McLimans, and Ellen Raskin. The exhibition, which runs from through December 6 and includes a myriad of free events for the public, explores each participating artist's process for producing a finished children's book, from conception to a finished set of original illustrations ready for the publisher. See sketches, paintings, and collages, as well as the book "dummies" usually only seen by publishers. The Fine Art of Children's Book Illustration also highlights finished illustrations from published books.



*Bees, Rene Graef*

Exhibition artists' work represents a time frame from the early 1960's through today, presenting an overview of changing graphic and computer aided-design processes. Visitors will delight in reading biographical text panels for each artist, which describe the artists' backgrounds and highlight some of their inspirational sources. With several book artists represented in the same space, viewers have the

opportunity to see a broad range of expression and style represented through various approaches to the relationship between narrative and image. Different ways of putting pictures and words together, as well as contrasts in design ideas and story content, set the gallery stage for the adventure. Visitors will find that children's book illustration is indeed a fine art, inhabiting a realm of its own, and with a history, context, and unique power to make imaginary worlds real. Each of these artists has a different way of entering the world of the child and bringing forth a gift composed of shapes, colors, lines, and words. This variety of creative expression will reward gallery-goers and perhaps surprise those not acquainted with the work of these nationally known artists who live and work in our midst. See below for a complete listing of The Fine Art of Children's Book Illustration exhibition events or visit [wisconsinacademy.org](http://wisconsinacademy.org) for more details.

- Sunday, November 8, 2:00 pm: James Watrous Gallery talk by Ginny Moore Kruse, Director Emerita, Cooperative Children's Book Center, UW-Madison.
- Sunday, November 8, 1-3:00 pm: James Watrous Gallery tour for families followed by a diorama workshop at the Madison Children's Museum.

**Creatively Driven**



[www.lemonstreetgallery.org](http://www.lemonstreetgallery.org)

4601 Sheridan Road Kenosha WI 53140

Tel 262-605-4745

**Nonprofit Artist's Collective**  
**Gallery Classes Events**

**Kenosha Union Park Project**

# KUPP

**Creative, Diverse, Arts-District Development**

[www.kenoshaunionparkproject.com](http://www.kenoshaunionparkproject.com)

## MILWAUKEE PLEIN AIR EVENT



The 2009 winners were: Best of Show – Pete Schassler, First Place- Kathie Wheeler, Second Place- Nancy Mac Donald, Third Place – William Suys. Quick Paint awards went to: First Place- Pat Zandron, Second Place- James Hemple, Third Place -Danuta Zarek.



*Left to right- Pate Schassler, Nancy Mac Donald, William Suys, James Hemple, Pat Zandron.*



*Kathie Wheeler, Keeping the Sacred Fire, Oil*

This September the south east chapter of WVA once again teamed up with the League of Milwaukee Artists to host The Milwaukee Plein Air – The Downtown Experience. This was the third year the two organizations collaborated, but the first time the event took place in downtown Milwaukee. Co-chairs Alisyn Kay from WVA and Joan Schneider from LMA began preparations last October and committee meetings were held regularly throughout the year. A great deal of time and effort was put forth by many members of the two groups in order to put on a very successful event. Eighty three artists registered to paint in the event. Ten days of ideal weather encouraged artists to get out there and create an outstanding body of work. The exhibition and silent auction took place on Friday September 18th. Entertainment was provided by alternative rock artist Annie B. Sales for the exhibition totaled over \$14,400. Thirty percent of sales were donated to the nonprofit, Artists Working in Education (AWE). Over \$5,000 in awards were given out to artists due to fundraising efforts from the Milwaukee Riverwalk District.

## NATURESCAPES BY TAMLYN AKINS



*Dancing Dames, watercolor, 19 in. x 27 in.*

**Tamlyn Akins'** show Naturescapes will be on view through - January 3, 2010 This exhibition of drawings and paintings is at Olbrich Botanical Gardens, 330 Atwood Avenue, Madison, WI 53704. Phone: 608-246-4550.

## JUDITH REIDY



*Dawn in the Mist, Judith Reidy, pastel*



*Ebony Morning, Judith Reidy, pastel*

# BILLHENRY WALKER'S SCULPTURE IN MILWAUKEE, IOWA AND FLORIDA



*Inuit's Bone Sequi III* which was sited on the Milwaukee Riverwalk in 2008-2009. It stands 18 feet tall and is made of fabricated aluminum. It is currently on loan to Davenport, IA

Billhenry Walker has installed "Monolith Mantra" an 8' tall sculpture on the levy overlooking the Mississippi River next to the Grand River Center in Dubuque. The work *Circum-Zoidal* is also on loan to a location on Second Street in Davenport, IA till May of 2011. It is made of a special aluminum extrusion and is powder-coated cherry-red. Walker

## FUTURE OF ZINGALE MURAL IN DOUBT AT UW-MADISON

by Tony Rajer

Around 1958 Wisconsin artist and UW art professor Santos Zingale (1908-1999) and others painted "UW Campus" for the School of Education. The mural remained in the Education building until 2009 when it was removed from the wall by contractors for the remodeling of the building. The oil-on-canvas mural, which had been glued to the wall with lead white adhesive sustained damage in the removal process. University officials, unaware of the history and importance of the mural are hoping that it can be made presentable again, though they say that funds are not available for restoration of the work. The Art Department, which falls under the School of Education has been asked to look at the mural. In addition, Zingale's first mural for the School of Education in 1943 is now lost, due to a previous remodeling. It's hoped that "UW Campus" might be saved and properly conserved, considering that no money has ever been invested in the care and preservation of the mural over the past 60 years, it would seem only right that the mural be treated with care and respect, considering Santos' pivotal role in the development of the arts in Wisconsin. Further information can be obtained by contacting rajert@gdinet.com



*Solar Synapse* which was sited at the Navy Pier show in 1987. It is currently being refurbished for a show at *SculptMiami* in December. It stands 18 feet tall and is 17.5' wide. It is also kinetic. The sculpture is fabricated aluminum seated on a steel base.

will be exhibiting several monumental sculptures plus a selection of indoor/outdoor sculptures 7-8 feet tall at "Sculpt Miami" held at the Lurie-Kavachnina gallery in Miami, FL from December 5, 2009 - November 30, 2010

## SUPPORTING LOCAL ART MAKES ALL OF US RICHER

by Christina Button

Recently I attended an enjoyable art opening in conjunction with our Appleton Art Center.

For years, I have encouraged my community and friends to experience the joy that I get from original art, especially in my home. Each piece has a story. It reflects a memory of some special time, place, person, artist, dealer, or just the feeling I get from how the artist uses certain colors and shapes.

When I get to know the artist, it's even more special because I make a connection to someone whose work has touched me. Lee Mothes was one such artist I met 21 years ago. I have watched

him grow as an artist over the years, and it has been a very rewarding experience.

A local businesswoman I know used all original art in her buildings. She cared about her people and it showed. Her employees had a wonderful environment to work in and the artists were pleased to have their work in a public space. To continue that connection when she retired, she gave her employees their favorite piece.

Artists are an essential part of a healthy, sustainable community. So let's show our appreciation and support whenever we can. We'll be richer as an individual and community for having done so.

**NEW@**  
ARTISTANDDISPLAY

**DANIEL SMITH**  
EXTRA FINE™  
**WATERCOLOR**  
AND NEW  
**WATERCOLOR**  
**STICKS**

WATERCOLOR STICKS  
COMBINE THE BEST ELEMENTS  
OF DRAWING & PAINTING..  
AND THE RESULTS ARE MAGICAL  
18 RICH VIBRANT COLORS  
HANDMADE & HAND SHAPED  
ALL LIGHTFAST RATED EXCELLENT  
PORTABLE & LONG LASTING

JOIN OUR EMAIL LIST  
at [artistanddisplay.com](http://artistanddisplay.com)  
RECEIVE MONTHLY  
eCOUPONS

**ARTISTANDDISPLAY** CELEBRATING 73 YEARS 9015 WEST BURLEIGH MILWAUKEE 53222 414 **442-9100**  
MWF 9-6 ▪ TUESDAY & THURSDAY 9-8PM ▪ SATURDAY 9-5 ▪ SUNDAY 12-4



**GAMBLIN OIL & MEDIUMS CLASS**

GAMBLIN ARTIST/REP ANDREA HARRIS  
WILL LEAD THIS HANDS ON WORKSHOP  
FOCUSING ON PAINTING MEDIUMS &  
COLOR PALETTES ▪ LEARN MORE ABOUT  
COLOR MIXING ▪ VALUE ▪ INTENSITY &  
OPACITY AS YOU CREATE 2 SMALL PAINTINGS  
USING 2 DIFFERENT COLOR PALETTES & YOUR  
CHOICE OF MEDIUM ▪ DESIGNED FOR  
MULTI-LEVEL ARTISTS THAT WANT  
HANDS ON EXPERIENCE WITH MEDIUMS &  
COLOR ▪ ALL GAMBLIN PAINT AND  
MEDIUMS ▪ PAINTING SURFACES AND  
DISPOSIBLE PALETTES WILL BE PROVIDED  
**PLEASE BRING YOUR OWN BRUSHES**

**SAT NOV 21**

RECEIVE  
COUPON  
FOR \$25.00  
TOWARDS  
GAMBLIN  
PRODUCTS  
**10 TO 4PM**  
\$85.00

REGISTER ON LINE [artistanddisplay.com](http://artistanddisplay.com)

**MATCUTTING CLASS**

HANDS ON CLASS WITH  
PROFESSIONAL FRAMER  
MARK DOMBEK ▪ LEARN THE  
BASICS OF SINGLE  
& DOUBLE MATS & HOW  
TO AVOID COMMON MAT  
PROBLEMS ▪ LOGAN 301S  
WILL BE PROVIDED FOR  
USE IN CLASS

**SAT NOV 14**  
**10 TO 4PM**  
\$69.00

**HOLIDAY SALE**

STARTS NOV 23  
ENDS DEC 31  
SAVE ON  
EASELS  
BRUSHES  
PAINT SETS  
CANVAS & MORE

**BACK IN THE WORLD: PORTRAITS OF WISCONSIN VIETNAM VETERANS**

Back in the World: Portraits of Wisconsin Vietnam Veterans will be on display at the Chazen from October 31 to January 3, 2010. This exhibit is comprised of nearly 30 large-format color portrait photographs. As part of its Wisconsin Stories project, Wisconsin Public Television has produced documentaries about Wisconsin veterans' experiences in World War II, Korea, and Vietnam. During production of the Vietnam project (to air in 2010), photographer James Gill took portraits of the veterans who participated in the documentary as a tribute to their service. These photographs provide insight into the veterans' memories and experiences, which they carry long after the war ends. The scale and presence of the images, combined with brief excerpts of interviews with their subjects, place them in a long tradition of art that delivers a powerful social message.

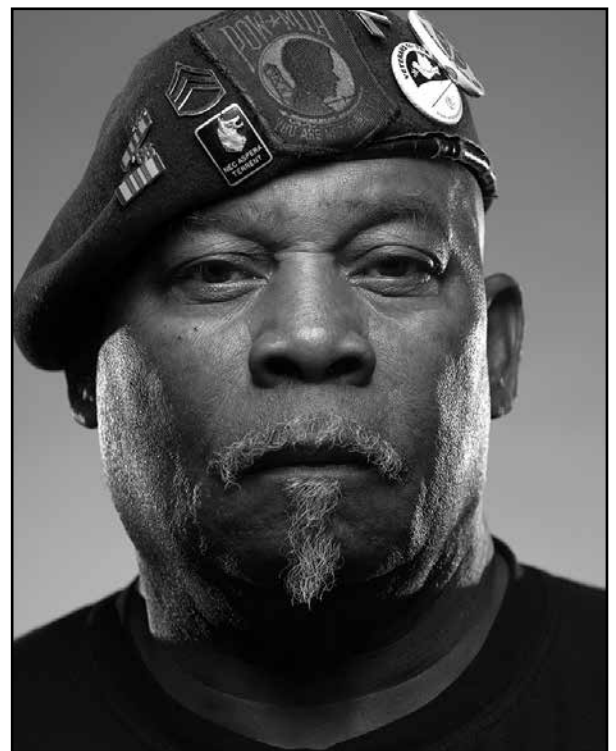
Events happening in conjunction with the exhibit include

- Panel Discussion and Reception, Wednesday November 11 (Veterans Day)

--6:00 p.m. Opening remarks by photographer James Gill, followed by a panel discussion with Vietnam veterans George Banda (Milwaukee) combat medic, 101st Airborne Div.; Bruce Jensen (West Allis), gunners mate, USS Stone County, Mobile Riverine Force; James Kurtz (Middleton), platoon leader, 1st Infantry Div.; Rev. Ray Stubbe (Wauwatosa), Navy chaplain, Siege of Khe Sanh; Willie Williams (De Forest), staff sergeant, 25th Infantry Div. Moderated by Mik Derks, Producer, Wisconsin Public Television

--7:00 to 8:30 p.m. Reception with refreshments and a cash bar

- Gallery Talk with photographer James Gill, Thursday November 19, 7:00 p.m.



*James Gill (American, b. 1955), Will Williams (De Forest), Army Staff Sergeant, 25th Infantry Division, 1966-67, silver-halide print, 40 x 30 in. Wisconsin Public Television*

# ARTIST STATEMENTS: WHAT ARE THEY? DO I NEED ONE?

by Tony Rajer

Artist statements are written tools to help you, the artist communicate with dealers, critics, and the public about your art. Artist statements often are requested for grant applications and can be placed on your web site. The statement can be as short as one sentence or as long as a paragraph or one page. Common length is about 100 words as it is important to be concise and clear. In essence it offers insight into who you are, what motivates you to make your work, and it can tackle ideas you have about your work that may not be visually addressed by looking at the work itself. It can focus on one or more topics such as symbols, or materials, or themes in your work. Artist statements help build a bridge between your art and the viewer.

Viewers look at your art and may have questions about it. Your artist statement can help answer those questions so that the audience can better appreciate your art. There are no hard and fast rules about artist statements, but use language that everyone can understand. Avoid "artspeak". Tell the reader what your art means to you and write in the first person. It can be a vital selling tool and part of your marketing strategy.

Artist statements are a fairly recent phenomenon in the art world as they only date back to about the 1970s. They are like the Artist Manifestos that collectives or art groups published in the 19th and 20th centuries, like the Impressionists or Fauves. The artist statement generally speaks for an individual rather than a collective; and forms part of the contemporary mindset of what it means to be an artist today.

Let's look at some examples: "My paintings are spontaneous statements that stem from experience in nature. I work rapidly as the moment of inspiration is fleeting." Keep it short and to the point.

Some statements can be lengthy as they can convey your feelings and motives for a new body of work that requires explanation. An example being...

*"My paintings are watermedia on paper. Florals and still-lives comprise a means for me to convey a modern view of traditional*

## EXHIBITION CALENDAR

### SOUTHEAST WISCONSIN

#### Museum of Wisconsin Art

300 S. 6th Avenue, West Bend 262.334.9638

[www.wisconsinart.org](http://www.wisconsinart.org)

- Unfolding Story...Panorama Painting in Milwaukee Through January 3, 2010
- Worlds of Wonder: Armin O. Hansen's Festive Float Designs Nov. 4 - Jan. 3, 2010

#### Milwaukee Art Museum [www.mam.org](http://www.mam.org)

414.224.3220

- Andy Warhol: The Last Decade through - January 3, 2010
- Figurative/ Figurative Prints: 1980s Rewind Through November 29

#### Walker's Point Center for the Arts

911 W. National Avenue, Milwaukee  
414.672.2787 [www.wpca-milwaukee.org](http://www.wpca-milwaukee.org)

- 17th Annual Dia De Los Muertos Exhibition October 30- November 24
- CoPA 3rd Annual Juried Photography Exhibition Friday, December 4 - January 16, 2010  
Milwaukee's Coalition of Photographic Artists (CoPA)

#### Milwaukee Institute of Art & Design

273 E. Erie St., Milwaukee 414.276.7889

[www.miad.edu/](http://www.miad.edu/)

- Open Canvas Benefit, November 21  
<http://www.miad.edu/content/view/882/413/>
- The Helmet Project Through November 8  
an exhibit of helmet art and design.

#### Riverwest ArtWalk

Riverwest Artists Association  
414.374.4722 [www.riverwestart.org](http://www.riverwestart.org)

#### Milwaukee Journal Sentinel Online

Art City, Mary Louise Schumacher  
<http://blogs.jsonline.com/artcity>

#### Charles Allis [www.cavtmuseums.org](http://www.cavtmuseums.org)

1801 N. Prospect Avenue, Milwaukee  
• Katie Musolf: Artist & Model through Nov. 8  
• Wisconsin Master's Series - Emily Groom  
December 2 - February 13, 2010

#### Villa Terrace [www.cavtmuseums.org](http://www.cavtmuseums.org)

2220 N. Terrace Avenue, Milwaukee, 414.278.8295

- Marilyn Annin Through January 17, 2010
- Alverno College - Art and Cultures Gallery,  
3900 S. 43rd Street, Milwaukee  
<http://depts.alverno.edu/art/gallery.htm>

#### Carroll University, Rowe Art Gallery

238 N. East Avenue, Waukesha

*subjects. Through exploration of the medium, I create realistic images which are both pleasing and stimulating to the viewer, as well as reflect the vigor and excitement with which I approach my painting."* Peggy Zalucha

*or "I transfer my brush drawings or digital photos to birch plywood, and cut them with traditional as well as electric tools. I allow the gouge marks in the negative space to print or blind emboss because my prints are as much about sharing the process with my viewer as they are about themes and images."* Bonnie de Artega

As an artist your writing skills may not be the best. Consider having a professional help you write or at least edit your statement. Remember it should reflect your unique qualities as an artist. Don't over intellectualize or dwell on too many irrelevant details. Give your reader the big picture and entice them to want to know more about you and your art. Avoid comparisons between your art and others, like "My recent work is like Monet's haystack series because.." (But you could say, "I am influenced by the summer light of Monet's haystack series.")

Use descriptive words and phrases that convey the unique qualities of your art to the reader. The statement should be coherent and direct without ambiguity. It should express your energy and your work.

Make a list of words or phrases that describe your art. Use convincing, compelling statements and words like inspired, creation, new, recent, conceptually based, sociopolitical, my work addresses, vivid, colorful, installations, color, shape, value, space, form, and texture. Look for your voice in your own words and discover what you want to convey to the viewer.

Ask your artist friends for copies of their statements. Make a collection as reference material for your files. Keep in mind that, like your Artist Business Plan, your Artist Statement requires updating and renewal on a periodic basis. Lastly enjoy composing your artist statement and writing it up, nurture it and let it evolve into something that truly reflects who you are as an artist. Good luck.

- Art Faculty Exhibition Through November 24

#### Sharon Lynn Wilson Center for the Arts,

**Ploch Gallery** [www.wilson-center.com/gallery.htm](http://www.wilson-center.com/gallery.htm)  
Brookfield (Mitchell Park) south of 198th & Capitol Dr.

- Melanie Kehoss  
November 6 - December 28  
Reception Wednesday, November 11 5:30
- Barry Roal Carlson, January 8 - February 27, 2010  
Reception: Thursday, January 21, 2010.

#### Anderson Arts Center [andersonartscenter.com](http://andersonartscenter.com)

121 Sixty Sixth Street, Kenosha  
• Winter Juried Show  
November 1 - January 3, 2010  
Reception: Sunday, November 1 1:30 - 4:00  
Winter Juried Show as well as a Holiday Exhibit, student work from Bradford High School, Kenosha, WI and "Sparkle" by Area Artists Group  
• Liquid Landscapes; Denizens and Diorama.  
January 24 - March 21, 2010

#### Racine Art Museum [www.ramart.org](http://www.ramart.org)

- Donna Schneier Collection: Art Jewelry of the 1980s and 1990s, Through January 3, 2010
- New and Novel 2009: Recent Gifts to RAM's Collection Through January 17, 2010
- Collection Focus - Michael Lucero at RAM Through January 17, 2010
- Therman Statom: Outside the Box Through July 25, 2010

**Uihlein Peters Gallery Milwaukee**  
1840 North Prospect Avenue 414-831-6875  
• 50 Women - Through November 14  
Curated by Sally Gauger Jensen.

**Gallery 218** www.gallery218.com  
207 East Buffalo St. Suite 218, Milwaukee

**Lemon St. Gallery** www.lemonstreetgallery.org  
4601 Sheridan Road, Kenosha 262.605.4745  
• Lemon Street Gallery 10th Anniversary  
Celebration, Saturday, November 14, 10am - 10pm  
Open House all day. Live music starts at 3pm.  
Dedications and proclamations, 4pm-5pm.  
Merriment for the rest of the evening.

• Artisree - Holiday Show & Sale  
December 2 - 27 Reception Saturday, December 12

**River's End Gallery** www.riversendgallery.com  
380W. Main St, Waukesha

**Haggerty Museum of Art** Marquette University,  
N. 13th Street & W. Clybourn Ave., Milwaukee  
www.marquette.edu/haggerty/

• Persian Visions Contemporary Photography  
from Iran, Through January 17  
• Pairings The Haggerty Celebrates 25 Years  
Through January 17, 2010

**Cedarburg Cultural Center**

cedarburgculturalcenter.org/  
W62 N546 Washington Avenue, Cedarburg

• Michael Casey and Sally Dubeck  
through November 29.

• Allen Caucutt & Debbie Sommer

December 13 - January 24, 2010  
Reception Sunday, December 13

**DeLind Gallery** www.delindgallery.com  
400 E. Mason St., Milwaukee, 414.271.8525

• Recent Acquisitions: (Ongoing)  
A collection of 19th and early 20th century American  
and European paintings and drawings Featuring:  
American Impressionist, Child Hassam (1859-1935)

**David Barnett Gallery**

1024 E. State St, Milwaukee, 414.271.8525

• Masters of Surrealism Oct. 16 - Jan. 9, 2010

Featured artists are Salvador Dali and Andre  
Masson.

**Alexander House** Port Edwards, WI

**Tory Foliard Gallery** www.toryfolliard.com  
233 N Milwaukee St 414-273-7311

• When Animals Talk, Through Nov. 28

• Mary Alice Wimmer, December 4 - 31

• Small Celebrations December 4 - 31 Reception  
Friday, December 4

• Sofia Arnold, January 8 - February 6, 2010

**Peltz Gallery**

1119 East Knapp St. Milwaukee 414.223.4278  
www.artnet.com/gallery/851/peltz-gallery.html

**Artworks Kenosha** www.artworkskenosha.com  
5002 7th Ave., Kenosha WI 53140 (262) 652-5911

**Wustum Museum**

2519 Northwestern Avenue Racine, 262.636.9177

• Wisconsin Photography 2009  
Through November 28

**Woodland Pattern Book Center**

720 E. Locust 414.263.5001, woodlandpattern.org

**Reuss Federal Plaza, First Floor Gallery**

• WVA SE Chapter Exhibition

October 31 - December 4

October 30-December 4

**Schauer Arts and Activities Center**

Suckow Family Art Gallery

147 N Rural St, Hartford

• WVA SE Chapter Exhibit

February 5 - March 15, 2010

**University of Wisconsin-Milwaukee**

**Institute of Visual Art (inova),**

(414) 229-5070 arts.uwm.edu/inova

2400 E. Kenwood Blvd.

• Sixth Annual Mary L Nohl Fellowship Exhibition  
Through December 13

• UWM Department of Visual Art Faculty Show  
Through November 13

• MA/MFA Fall Thesis Exhibition

November 20 - December 12

Reception Friday, November 20 5-7 pm

Gallery talk: Tuesday, November 24, 4-6 pm

• Woven Images, November 5 - December 4

• Repetitions, January 4 - March 19, 2010

• BFA Exhibition I, January 26 - February 5, 2010

• Crossing Over 2009, through November 13

**Kenosha Public Museum**

5500 First Avenue, Kenosha

• John Fleischer- Retrospective

Through November 29

**St. Mark's Episcopal Church Gallery**

stmarksmilwaukee.org

2618 North Hackett Avenue

NE corner of Hackett and Bellevue

• Watercolors by William K. Davis

November 15 - December 28

Reception: November 15, 12:30 - 2:30 pm

**Milwaukee Gallery Night and Day**

January 15 & 16, 2010

## SOUTH CENTRAL WISCONSIN

**Wisconsin Arts Board Gallery**

(DOA) Building, 101 E. Wilson Street, Madison

http://artsboard.wisconsin.gov/static

• WAB celebrates 35 years! Send an email to  
congratulate them to: artsboard@wisconsin.gov.

• Life Scapes September 21 - November 13

• Environments, November 1 - December 1

• COME WHAT MAY

January 11 - March 5, 2010

South Central Chapter, Wisconsin Visual Artists  
Group Show

**Chazen Museum of Art** www.chazen.wisc.edu

800 University Ave, Madison 608.263.2246

• Nicola López through January 3, 2010

Back in the World: Portraits of Wisconsin

Vietnam Veterans, through January 3, 2010

**Madison Museum of Contemporary Art**

227 State St., Madison 608.257.0158 mmoca.org

• Curators' Choice: New Works from

MMoCA's Collection June 6-November 8

• Holiday Art Fair

November 20 - 22

• Signs of the Times: Robert Rauschenberg's

America Through January 3, 2010

**Wright Museum of Art** www.beloit.edu/wright

Beloit College (608) 363-2097

**Wisconsin Academy Watrous Gallery**

Madison, www.wisconsinacademy.org

• The Fine Art of Children's Book Illustration  
Through December 6

Presenting the work of several of Wisconsin's  
most accomplished illustrators of children's  
books, including Laura Dronzek, Nancy Ekholm  
Burkert, Lois Ehler, Kevin Henkes, Renée  
Graef, David McLimans, and Ellen Raskin.

• Denis Sargent and Michael Velliquette

Side-by-side solo exhibitions

December 15-February 7, 2010

Opening reception December 18, 5:30-7:30 pm

Artists' talks begin at 6:30 pm

**Wisconsin Union Galleries** union.wisc.edu/art/  
800 Langdon St., Madison

• Annual Student Art Sale November 18-20

• Exhibitions by Lisa Koch, Evan Baden, Thomas

Ferrella, and student curators from the WUD Art

Committee, December 4 - January 19, 2010

• Exhibitions by Steven Poster, Elisabeth Karpov,

Bobbette Rose & Katherine Steichen Rosing, and

Logu Ramasamy, January 29 - March 9, 2010

**Overture Community Galleries**

in Overture Center, Madison

www.overturecenter.com/galleries.htm

• Oil and Water Mixed Oct. 23 - Jan. 3, 2010

Doug E. L. Haynes and Aaron Wilbers

• Miriam Hall & Justin Nolan, The Known and

the Unknown, Oct. 23 - Jan. 3, 2010

Dave Beck & Piper Vollmer, Interior Plot, Oct.

23 - Jan. 3, 2010

Reception Friday, October 23, 6 - 8 pm.

- Panel Discussion on The contemporary arts

of Wisconsin Friday Nov. 13 7pm moderated

by Gary John Gresl in the Wisconsin Studio

• Willy Street in the '70s: Changing the World

through Art, through November 15

Glendale Elementary Children's Book

Illustration Show Nov. 18 - Jan. 8, 2010

**The Fanny Garver Gallery (608)256-6755**

230 State St, Madison www.fannygarvergallery.com

**Madison's Central Library Exhibit Space,**

201 W. Mifflin St. (across from Overture)

**Olbrich Botanical Gardens,** 330 Atwood

Avenue, Madison, 608-246-4550.

• Tamlyn Akins: Naturescapes

October 4 - January 3, 2010

**Jack Macaulay Gallery** 1202 Williamson St.,  
Madison

**UW Hospital Skylight Lounge Gallery**

600 Highland Drive, Madison

• Artful Women 2009 Show & Sale

November 1 - December 4

Reception Sunday, November 15 3-5 pm

**Steinhauer Trust Gallery**

U.W Arboretum Visitor Center, Madison

• A Year in the Driftless

January 3 - February 28, 2010

**MaCha Teahouse + Gallery,**

1934 Monroe St, Madison

• Barbara Barnard and Rita Yanny

November 3 - 30

Reception Friday, November 6 6-8

New works by Barbara Barnard and Rita Yanny

## NORTHEASTERN WISCONSIN

**Appleton Art Center** www.appletonartcenter.org

• Fritz Faiss: A Retrospective

Through November 28

• Source of Inspiration: Downtown Appleton

Through November 21

A juried exhibition featuring works of art

inspired by Appleton's downtown.

• Phil Sealy, through November 27

**Bergstrom - Mahler Museum**

165 N. Park Avenue, Neenah, 920.751.4658

www.bergstrom-mahlermuseum.com

**Central Wis. Cultural Center**

240 Johnson St., Wis. Rapids

• Holiday Show, November 12 - December 31

Reception Thursday, November 12 5-7 pm

**Miller Art Museum**

107 South 4th Ave., Sturgeon Bay 920.746.0707

www.dcl.lib.wi.us/millerartmuseum.htm

• 34th Juried Annual Through November 10



FEATURED ARTIST JEFF HARGREAVES



*Remembering Dad, oil on linen*

Currently you can find Jeff's artwork at M Gallery of Fine Art in Sarasota Florida, Fine Line Designs Gallery in Door County Wisconsin, Jack Richeson School of Art and Gallery, The Hang Up Gallery in Neenah Wisconsin and Coventry Glass in Appleton Wisconsin. Hargreaves website is [www.jeffhargreaves.com](http://www.jeffhargreaves.com)



*Onions and Garlic, 16" x 20", oil on linen*



*Backward Glance, 20" x 16", oil on linen*



*Day's End, 18" x 21", oil on canvas*

**J. M. Kohler Arts Center** www.jmkac.org  
608 New York Avenue, Sheboygan 920.458.6144  
• American Story

**Leigh Yawkey Woodson Art Museum**  
700 N. 12th St., Wausau 715.845.7010  
www.lywam.org,

- Birds in Art through November 15
- In Search of Norman Rockwell's America  
November 21 - January 24, 2010

**Neville Public Museum,**  
210 Museum Place, Green Bay 920.448.4460  
www.nevillepublicmuseum.org/

- Neville Museum's 65th Art Annual  
Through January 3, 2010

**Plymouth Arts Foundation:**  
Gallery 110 North, Plymouth 920.892.8409  
www.plymoutharts.org

**Richeson School of Art & Gallery**

- 557 Marcella St. Kimberly
- The Richeson 75: International Landscape,  
Seascape & Architectural Art Competition 2009  
Through December 31

**Peninsula School of Art** 920-868-3455

- 3900 County Road F, Fish Creek
- Days of the Dead, Through November 14  
Days of the Dead altars festooned with sugar  
skulls, marigolds and other memorabilia.
  - Life Through a Plastic Lens  
November 20 - January 2, 2010  
Reception Saturday, November 21 5-7pm  
Photos by the Plastic Camera Group of Madison

**Riverfront Arts Center**

- 1200 Crosby Ave., Stevens Point.
- 11th Annual Fine Art Gift Gallery  
November 20 - December 14

**Rahr West Art Museum** rahrwestartmuseum.org  
610 N. 8th Street, Manitowoc

**Wausau Center for the Visual Arts**

- www.cvawausau.org
- \* You Are What You Wear November 20 - January 3,  
2010 (Gallery Gala: Friday, November 20, 5 - 7 pm)
  - Examining the Fine Print, thru November 15
  - Midwest Seasons Jan. 15 - Feb. 28, 2010  
Reception Friday, January 22, 2010

**St. Norbert College Art Galleries**

Jeanne M. Godschalx Gallery Baer Gallery, Carol &  
Robert Bush Art Center  
920.403.3370 www.snc.edu/artgalleries

**Paine Art Center & Gardens** 920.235.6903  
1410 Algoma Blvd., Oshkosh www.thepaine.org

**UW Oshkosh Priebe Gallery**

www.uwosh.edu/art/galleries/index.php

**Oshkosh Gallery Walk - 1st Saturday**

- www.oshkoshgallerywalk.com
- First Saturday of every month, 6-9 p.m.

**UW Green Bay Lawton Gallery**

2420 Nicolet Drive, Green Bay 920.465.2916  
www.uwgb.edu/lawton.

**Lawrence University Wriston Galleries**

PO Box 599, Appleton 920.832.7000  
www.lawrence.edu/news/wriston/

**UW-Manitowoc Founders Hall Art Galler**

920.683.4735

**The Aylward Gallery**

University of Wisconsin-Fox Valley

**ARTgarage / C4 Arts**

1400 Cedar Street, Green Bay 920.448.6800  
www.theartgarage.com

**Coventry Glassworks and Gallery**

514 W College Ave. Appleton 920.739.5762  
1.800.892.4610

**Nicolet College Rhinelander**

**Northern Waters Gallery**

308 Pine St., Green Bay 920.465.0492

**New Visions Gallery**

Marshfield www.newvisionsgallery.org

**Main Street Artworks,**

627 Main Street, Hilbert 920.853.7348  
www.mainstreetartworks.com/

**Reaching New Heights Gallery**

Marshfield Clinic - Weston Center  
www.wvguild.com

**The Flying Pig Art Gallery and Greenspace**

N6975 State Highway 42, Algoma 920.487.9902  
www.theflyingpig.biz/index.html

**The Hang Up Gallery**

204 W. Wisconsin Avenue, Neenah  
HangUpGallery@aol.com 920-722-0481

**Hephaestus Foundry and Forge**

12479 Hwy 42, Gills Rock 920.854.6374  
www.hephaestusfoundry.com

**The Wild Apple Gallery**

210 Main St., Menasha  
www.wildapplegallery.com

- The Year Ahead

November 25 - January 1, 2010

Reception Saturday, December 5 6-9pm

Works from all artists exhibiting in the gallery  
in 2010 Including: Jeff Hargreaves, Julie Jilek,  
Michelle Missner, Kim Wozniak, Kate Mueller and  
David Kapszkiewicz

## OPPORTUNITIES

**Exhibition Proposals for 2011 in La Crosse**

Call to artists: The Pump House Regional Arts  
Center is now accepting exhibition proposals  
for 2011. The deadline for applications in  
January 31, 2010. For more information call  
608-785-1434

**Adult Mixed Level & Medium Classes**

Any level may start at any time. Classes are on-  
going and mixed as to level and medium. Also  
landscape painting (in oil or acrylic) workshop  
November 14 - 15, Dodgeville, contact Jeb via  
phone: home- 608.935.7046 or cell-608.574.7011 or  
email: jebprzak@charter.net

**Watercolor Techniques** November 13 - 14

Peninsula School of Art, 3900 County F  
Fish Creek, Phone: (920) 868-3455 Fax: (920) 868-  
9965 Email: info@peninsulaartschool.com  
www.peninsulaartschool.com/

## MEMBER NEWS

login to artinwisconsin.com to upload news or  
email news to AIW@emeraldstudio.com

**Mary Ann Carter** received a Patron award in the  
22nd annual Northern National Art Competition  
at Nicolet College in Rhinelander, 2009

**Pacia Sallomi** has a work included in the book,  
"Et pour toi c'est quoi l'art?" It is scheduled to  
be published the end of this year by Entrez Sans  
Frappier, Toulouse, France.

**Hermeine Ehlers** has been accepted to the 2009  
Sumi-e International Painting Exhibition. Her  
Artwork will be shown in Galleries in Japan, China,  
and Tiwan

**Ginger Frederick** won an "Award of Excellence"  
at the League of Milwaukee Artists exhibition at the  
Anderson Art Center in Kenosha

**Judith Reidy** won Best of Show at the Plymouth  
Center for the Arts in the Wisconsin Pastel Artist  
Exhibit "Go Figure" running during January-March  
2009.

The College of Arts and Letters at the University of  
Wisconsin Platteville has selected **Charles Wickler**  
to receive their 2009 Arts And Letters Award.

**Mary Francis Hill** has been awarded membership  
status to the Wisconsin Watercolor Society.

Hill's work will appear in the 2010 Dane County  
Cultural Affairs Calendar as January's featured  
artwork.

**Susan J Atkinson's** painting was recently juried into  
the Richeson 75 International 2009 Figure/Portrait  
Exhibition



*Everybody's Monkey, Oil / Pencil on Panel,  
12.75" x 14", 2009*

**Jeb Art Open House** November 8

An annual event featuring new works of Jeb Prazak  
and selected students: 4364 Park Ridge Road  
Dodgeville, WI 53533, 608 935 7046

In Dodgeville, from Subway/Mobil spotlight on  
Hwy 23N, go 3 m. to 1st left past Jumpin Jupiter  
Store onto Park Ridge Road. 2nd home on right  
**Chris Miller** received a WVA Biennial Award at  
the 2009 Wisconsin Artists Biennial in Manitowoc.  
Limited edition giclee prints are available: contact  
jw lawson Fine Art for details.

**Laura J. Nelke** had her painting juried into the  
Culture and Agriculture exhibition at New Visions  
Gallery in Marshfield, WI. Nelke also had a work

in the RICHESON 75: International Landscape, Seascape & Architectural Art Competition 2009. Laura Nelke's work will be included in the 11th Annual Riverfront Arts Center Fine Art Gift Gallery, 1200 Crosby Ave., Stevens Point, WI November 20 - December 24 Reception Friday, November 20

**Carol Weiss** had an oil painting selected for a greeting card in the American Diabetes Association's 2009 'Gift of Hope' Catalog.

**Marcia Hero** won an Honorable Mention Award at the Wauwatosa Plein Aire Affair Competition in July.

**Sally Berner** has work at the Hiram Blauvelt Art Museum in Oradell, NJ.

**Carolyn Rosenberger** has work in the Neville Museum's 65th Art Annual until - January 3, 2010

**Tamlyn Akins'** show Naturescapes will be on view through - January 3, 2010 This exhibition of drawings and paintings is at Olbrich Botanical Gardens, 330 Atwood Avenue, Madison, WI 53704. Phone: 608-246-4550.

**Barbara Barnard and Rita Yanny** are showing New works at MaCha Teahouse + Gallery 1934 Monroe St, in Madison November 3 - 30 Reception Friday, November 6 6-8

EarthCurve will have work by abstract painters **Katherine Steichen Rosing and Bobbette Rose** at the Wisconsin Union Theater Gallery on University of Wisconsin--Madison at 800 Langdon Street Madison January 29 - March 9, 2010 Reception Friday, January 29, 2010 7 - 9 pm

**Janet Roberts, Angela Laughingheart** and many others are participating in a show curated by Sally

Gauger Jensen called 50 Women. It is at the Uihlein Peters Gallery in St. John's on the Lake. 1840 North Prospect Ave in Milwaukee through November 14

**Niemi Sculpture Gallery & Garden** 13300 116th Street in Kenosha has a Holiday Sculpture Opening on November 21 - 22 Saturday November 21 11-4pm Sunday November 22 noon-4pm, 262-857-3456

**Mary Francis Hill** has work in National Watercolor Society 89th Annual Exhibition through December 20, in Brea, CA. In addition she has been awarded signature status.

**Beki Borman** will be showing new work at the Madison Holiday Art Fair, November 20 - 22 at the Madison Museum of Contemporary Art 227 State Street, in Madison

**Angela Laughingheart** will exhibit a series of 3-D fiber installations with an aquatic theme in the show Liquid Landscapes; Denizens and Diorama. January 24 - March 21, 2010 at the Anderson Art Center 121 66th Street in Kenosha

**Michele Missner** has work at Thimke Jeweler's Gallery, Oshkosh till November 30

**Maggie Venn's** show Environments is on view at Wisconsin Arts Board Gallery in Madison November 1 - December 1

**Allen Caucutt & Debbie Sommer** have an Exhibit of New Work December 13 - January 24, 2010 Reception Sunday, December 13 at the Cedarburg Cultural Center, W62N546 Washington Ave in Cedarburg WI

**CathyJean Clark** will be part of the group exhibit "Examining The Fine Print" at the Center for the

Visual Arts, 427 N 4th Street, Wausau WI Oct 2- Nov 15. Clark is also participating in the LAP 20th National Exhibition, Los Angeles Municipal Art Gallery, Los Angeles, CA on view through Jan 3, 2010

**Kathleen D'Angelo's** show See it My Way is on view at Savoir Faire Gifts, 5 N. Pinckney, Madison until November 30

**Heather Denson** will share her oils on canvas at the 2nd Annual Advertiser's Press Show November 7 at Ad Press, 2222 Parview Road, Middleton, WI 53562

**Jeff Hargreaves** has a One Man Show at Wild Apple Glass Studio & Gallery, 210 Main Street Menasha, January 7 - February 19, 2010 Reception Saturday, January 9, 2010 6-9 pm. Hargreaves also has work in the Oil Painters of America Eastern Regional Exhibit in Jacksonville, FL.

**Liz Phillips** will have approximately 20 pieces on display in the street-level gallery of PyraMax Bank at 318 N. Water Street in Milwaukee's Historic Third Ward, until December 31

The Wisconsin Pastel Artists "Autumn Kaleidoscope" exhibition will be held at the One Way Cafe and Gallery at 1425 N. Underwood Avenue in Wauwatosa September 28 - November 14.

**Brian McCormick's** show A Year in the Driftless will run from January 3 - February 28, 2010, at the Steinhauer Trust Gallery, U.W Arboretum Visitor Center in Madison

**Michael Casey and Sally Dubeck** will be showing abstract works at Cedarburg Cultural Center through November 29.

## JOIN Wisconsin Visual Artists

NAME \_\_\_\_\_  
 ADDRESS \_\_\_\_\_  
 CITY \_\_\_\_\_ STATE \_\_\_\_\_ ZIP \_\_\_\_\_  
 PHONE \_\_\_\_\_ E-MAIL \_\_\_\_\_  
 WEBSITE \_\_\_\_\_

MEDIA (if applicable) \_\_\_\_\_

### WVA member benefits include:

- Subscription to Wisconsin Visual Artists quarterly magazine
- Opportunities to enter juried WVA chapter and statewide exhibitions
- Valuable programs and chapter meetings
- Your website linked to [www.wisconsinvisualartists.com](http://www.wisconsinvisualartists.com)
- Opportunities to network

**Mail this form along with 8-10 JPG images or slides, or the URL of your website and a current resume.**

Supporting and renewing members need not send images

Joint Household Membership (\$15 discount offered for sharing mailings)

### Mail to the nearest membership chair

Michael Kutzer  
 1811 E Nock Street  
 Bay View, WI 53207

Lee Mothes  
 425 Dixon Street  
 Kaukauna, WI 54130

Tamlyn Akins  
 4629 County Road JJ  
 Black Earth, WI 53515

*Note: Annual membership dues are paid in June. Dues for New members will be prorated on a quarterly basis. (i.e. New members joining after June 1 pay full rate: \$40, those joining after Sept. 1 pay \$30, after Dec. 1 \$20, and after March 1 \$10 )*

### MEMBERSHIP CATEGORIES

#### SUPPORTING

- Benefactor \$1,000 or more
- Patron \$500
- Sustainer \$300
- Contributor \$150
- Donor \$80
- Friend \$40

For the person, institution, business, or gallery wishing to support the arts in Wisconsin

#### PROFESSIONAL (\$40)

For the artist with an established resume

#### ASSOCIATE (\$40)

For the artist who seeks opportunities to strengthen his/her resume

#### STUDENT (\$30)

For the artist who is pursuing an art degree



Wisconsin Visual Artists  
 Formerly Wisconsin Painters & Sculptors  
 Art In Wisconsin  
 1008 Emerald Street  
 Madison, WI 53715



*This publication is supported in part by a grant from the Wisconsin Arts Board with funds from the State of Wisconsin.*

## SUPPORT THE WVA ENDOWMENT FUND

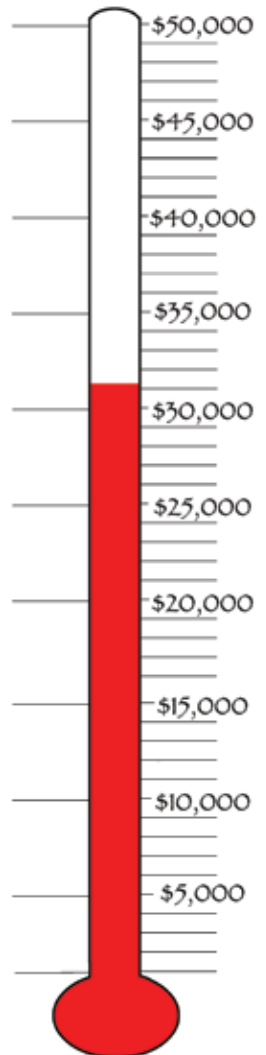
### THE WVA ENDOWMENT FUND...OUR FUTURE

Consider making a tax deductible contribution to the Wisconsin Visual Artists endowment fund. The endowment fund exists to secure the financial future of WVA. Once our goal of \$50,000 is reached, WVA will begin to tap the interest earned from your donations. We need to build this fund up substantially in order to make that vision a reality.

The work our organization does has proven valuable to artists and citizens of our State. Our activities include the Wisconsin Artists Biennial, the artist/art exchange with Japan called "Two Cultures, One Spirit", our partnership in creating the Wisconsin Visual Art Lifetime Achievement Awards, the publication and distribution of this publication "Wisconsin Visual Artists magazine" and the website [www.WisconsinVisualArtists.com](http://www.WisconsinVisualArtists.com), other exhibits, programs and professional level associations.

Please seriously consider making a contribution to the WVA Endowment Fund. All donations are tax deductible and we are in the midst of a matching funds challenge grant from the Ragir Foundation.

**To donate to the WVA Endowment Fund, send a check to:**  
**WVA Endowment Fund**  
**119 S. Second St.**  
**Mt. Horeb, WI 53572**



**I SUPPORT** **Wisconsin Visual Artists**

NAME \_\_\_\_\_

ADDRESS \_\_\_\_\_

CITY \_\_\_\_\_ STATE \_\_\_\_\_ ZIP \_\_\_\_\_

PHONE \_\_\_\_\_ E-MAIL \_\_\_\_\_

DONATION \_\_\_\_\_ \$5000 \_\_\_\_\_ \$1000 \_\_\_\_\_ \$500 \_\_\_\_\_ \$250 \_\_\_\_\_ \$100 \_\_\_\_\_ \$50 \_\_\_\_\_ OTHER \_\_\_\_\_