

WWW.WISCONSINVISUALARTISTS.COM

Complimentary copy ~~\$3.50~~

This publication is supported in part by a grant from the Wisconsin Arts Board with funds from the State of Wisconsin.



FEATURED ARTIST HELEN KLEBESADEL

Orchids and Other Flora

My visual concerns run the gamut from careful study to poetic, symbolic and sometimes political representations of nature and human nature. Using watercolor as my primary medium I explore the magic found in every day experiences and the broad social issues represented through common objects.

The watercolors shown here are some of the artworks that will be exhibited as part of a three-person exhibition, *Orchids and Other Flora* at the Grace Chosy Gallery in Madison, WI with artists Peg Ginsberg and Yueh-mei Cheng. Opening November 5th, the exhibition continues until November 27, 2010.

I paint what I am interested in learning about. Recently orchids have caught my attention. While most of us think of orchids as the coveted ornamental domestic plants known for their delicate exotic grace that symbolizes luxury, beauty and strength, I find myself drawn to exploring the place of the wild, the common, and the overlooked. Currently I find myself most interested in discovering the wild, and sometimes endangered, orchids of Wisconsin and exploring the vanilla plant, the only orchid we cultivate for its flavor and food-enhancing aroma. These paintings represent my physical, emotional, and intellectual journey through the Wisconsin woods and prairies and an exploration of the global history of vanilla and its cultivation past and present.

Vanilla Orchids I, watercolor, 30x22, 2010

see more work on page 5



WVA EVENTS

South East Chapter Meetings

• Wed., November 3, 6:00-8:00 p.m. Juliet Jaeger, Printmaker and Art Conservator

• Wed., December 1, 6:00-8:00 p.m. Katie Musolff, Artist in Residence at the Pfister Hotel in downtown Milwaukee

• Wed. January 5, TBA

• SE Chapter Show Alverno College, Milwaukee, January 26 - February 27, 2011

Northeast Chapter Meetings

• November 16 Appleton Public Library, Appleton, 225 N. Oneida Street, one block north of College Avenue, between Washington and Franklin. Meeting at 7:00, Program at 7:30. Alison Gates, Associate Professor at UWGB, teaches textiles, design and Women's Studies courses.

• December 21 meeting/party: At the home of Chris Style and Tony Rajer, 2731 Bay Settlement Road, Green Bay, WI. Meeting at 7:00 with party to follow. Re-gifting party. Bring something you made or want to give or re-gift to another - have fun. All presents brought to the party will be numbered and then those who brought a present will draw for one (hopefully not their own!). Bring your own drink / hot apple cider will be served

South Central Chapter Meetings

• November 16 Sarah Aslakson at the Steenboch Gallery

• December 21 Christmas Party at Lee Weiss' home

• January 18 Critique at the Steenboch Gallery

ADVERTISE

Find rates at www.wisconsinvisualartists.com

SUBSCRIBE

Wisconsin Visual Artists Magazine is published 4 times per year. The annual subscription rate for non-members is \$20.00. To subscribe send a check payable to WVA to

WVA Attn: Doug Haynes
1008 Emerald St.- Madison, WI 53715

CONTACT

This publication is edited by Doug E. L. Haynes
aiw@emeraldstudio.com
608.255.0201

GET INFO TO US

Members and venues may post events, exhibits and opportunities on our site. www.wisconsinvisualartists.com

Post info one month prior to the issue date; i.e., Oct. 1 for the November issue.

Magic Image Workshops presents ARAN ISLANDS/CO. CLARE WATERCOLOR WORKSHOP with Amy Arntson

June 18 - 26, 2011

There's no Irish trip like a west coast of Ireland trip. You will visit breathtaking land and seascapes, while having the opportunity to receive instruction from watercolor artist, Amy Arntson. An Emerita Prof. of Art at UW-Whitewater, Arntson is widely known for artful explorations of the surface of water, and on this trip she will help you explore the theme of Irish waters... from ocean, bays, rivers and falls, and even holy wells. We visit Galway, Doolin and the Burren, plus spend days painting on the unique Aran Islands. Even the non-painter will find a wealth of activities and sites that will make this a unique and memorable trip.

Cost: \$1,895 includes all accommodations, ground transportation/ferries, all breakfasts, five evening meals, speakers and guest artists. Airfare not included. Terms: \$500 per person deposit due at time of registration with final balance is due 45 days prior to departure. Workshop size limited to 10.

For more info on Arntson, www.amyarntson.net. For complete trip information, terms and registration, request a form from Magic Images at pcurtindelker@gmail.com.

CREATIVELY DRIVEN

www.lemonstreetgallery.org

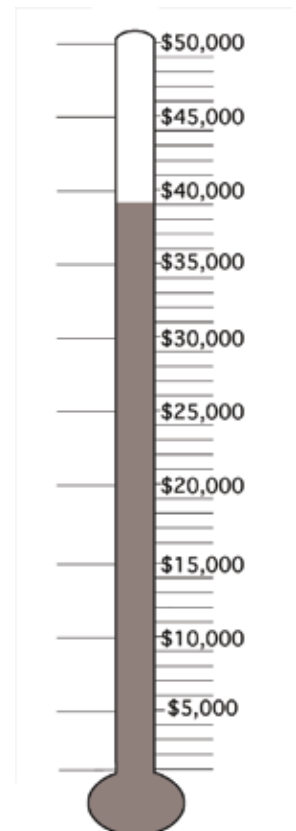
4601 Sheridan Road Kenosha WI 53140
Tel 262-605-4745
Nonprofit Artist's Collective
Gallery Classes Events

KenoshaUnionParkProject

KUPP

Creative, Diverse, Arts-District Development
www.kenoshaunionparkproject.com

CONTRIBUTE TO OUR ENDOWMENT



50% OFF CANVAS ART ALTERNATIVES PREMIUM STRETCHED

MSRP
8oz COTTON DUCK-TRIPLE ACRYLIC WHITE GESSO PRIMED WRAPPED CANVAS WITH FLEXIBLE SPLINE STAPLE FREE EDGES

SALE THRU DEC 31 2010

STUDIO 7/8" EDGE

| | MFG LIST | SALE | | MFG LIST | SALE |
|-------|----------|-------------|-------|----------|--------------|
| 4x4 | 3.99 | 1.99 | 12x48 | 25.29 | 12.64 |
| 4x5 | 4.09 | 2.04 | 14x14 | 11.99 | 5.99 |
| 4x6 | 4.39 | 2.19 | 14x18 | 11.09 | 5.54 |
| 4x12 | 5.89 | 2.94 | 15x30 | 17.19 | 8.59 |
| 5x5 | 4.69 | 2.34 | 16x16 | 13.39 | 6.69 |
| 5x6 | 5.09 | 2.54 | 16x20 | 13.19 | 6.59 |
| 5x7 | 5.29 | 2.64 | 18x18 | 15.89 | 7.94 |
| 6x6 | 5.49 | 2.74 | 18x24 | 16.69 | 8.34 |
| 6x8 | 5.69 | 2.84 | 18x36 | 22.59 | 11.29 |
| 6x9 | 5.79 | 2.89 | 20x20 | 16.29 | 8.14 |
| 6x12 | 6.19 | 3.09 | 20x24 | 17.59 | 8.79 |
| 8x8 | 6.29 | 3.14 | 20x30 | 22.89 | 10.59 |
| 8x10 | 6.19 | 3.09 | 22x28 | 21.89 | 10.94 |
| 8x16 | 9.19 | 4.59 | 22x30 | 22.89 | 11.14 |
| 8x24 | 10.29 | 5.14 | 24x24 | 22.39 | 11.19 |
| 9x12 | 7.29 | 3.64 | 24x30 | 23.89 | 11.94 |
| 10x10 | 6.89 | 3.44 | 24x36 | 29.19 | 14.59 |
| 10x20 | 10.19 | 5.09 | 24x48 | 37.09 | 18.54 |
| 10x30 | 14.59 | 7.29 | 30x30 | 36.49 | 18.24 |
| 11x14 | 9.59 | 4.79 | 30x40 | 38.49 | 19.24 |
| 12x12 | 9.69 | 4.84 | 30x48 | 45.19 | 22.59 |
| 12x16 | 10.09 | 5.04 | 36x36 | 42.49 | 21.24 |
| 12x24 | 12.69 | 6.34 | 36x48 | 53.09 | 26.54 |
| 12x36 | 18.29 | 9.14 | 40x60 | 83.49 | 41.74 |

GALLERY 1.5" EDGE

| | MFG LIST | SALE | | MFG LIST | SALE |
|-------|----------|--------------|-------|----------|--------------|
| 4x12 | 11.59 | 5.79 | 16x16 | 29.19 | 14.59 |
| 5x5 | 10.59 | 5.29 | 16x20 | 31.89 | 15.94 |
| 5x7 | 11.89 | 5.94 | 18x18 | 31.89 | 15.94 |
| 6x6 | 11.79 | 5.89 | 18x24 | 35.79 | 17.89 |
| 6x8 | 12.99 | 6.49 | 18x36 | 49.09 | 24.54 |
| 6x9 | 13.19 | 6.59 | 20x20 | 33.79 | 16.89 |
| 6x12 | 15.29 | 7.64 | 20x24 | 35.19 | 17.59 |
| 8x8 | 14.99 | 7.49 | 20x30 | 41.49 | 20.74 |
| 8x10 | 15.89 | 7.94 | 20x60 | 69.99 | 34.99 |
| 8x16 | 22.59 | 11.29 | 22x28 | 49.89 | 24.94 |
| 8x24 | 26.49 | 13.24 | 22x30 | 50.89 | 25.44 |
| 9x12 | 18.69 | 9.34 | 24x24 | 46.39 | 23.19 |
| 10x10 | 17.89 | 8.94 | 24x30 | 51.79 | 25.89 |
| 10x20 | 27.19 | 13.59 | 24x36 | 53.09 | 26.54 |
| 10x30 | 31.09 | 15.54 | 24x48 | 58.39 | 29.19 |
| 11x14 | 23.19 | 11.54 | 30x30 | 55.69 | 27.84 |
| 12x12 | 23.29 | 11.64 | 30x40 | 63.69 | 31.84 |
| 12x16 | 26.49 | 13.24 | 30x48 | 65.29 | 32.64 |
| 12x24 | 30.49 | 15.24 | 36x36 | 63.69 | 31.84 |
| 12x30 | 32.99 | 16.49 | 36x48 | 72.99 | 36.49 |
| 12x36 | 35.79 | 17.89 | 40x40 | 74.79 | 37.39 |
| 14x14 | 28.79 | 14.39 | 48x48 | 98.99 | 49.49 |
| 14x18 | 31.09 | 15.54 | 48x60 | 112.59 | 56.29 |
| 15x30 | 37.09 | 18.54 | 48x72 | 138.99 | 69.49 |
| 15x45 | 47.79 | 23.89 | 54x54 | 120.99 | 60.49 |
| 15x60 | 60.49 | 30.24 | 60x72 | 164.99 | 82.49 |

DEEP 3" EDGE

| | MFG LIST | SALE |
|-------|----------|--------------|
| 5x5 | 14.59 | 7.29 |
| 6x6 | 16.79 | 8.39 |
| 8x8 | 19.19 | 9.59 |
| 8x10 | 21.39 | 10.69 |
| 9x12 | 23.89 | 11.94 |
| 10x10 | 26.49 | 13.24 |
| 11x14 | 30.49 | 15.24 |
| 12x12 | 29.19 | 14.59 |
| 12x16 | 33.19 | 16.59 |
| 12x24 | 39.79 | 19.89 |
| 15x30 | 47.79 | 23.89 |
| 16x20 | 42.49 | 21.24 |
| 18x24 | 46.39 | 23.19 |
| 18x36 | 65.09 | 32.54 |
| 20x20 | 49.09 | 24.54 |
| 24x24 | 61.09 | 30.54 |
| 24x30 | 69.39 | 34.69 |
| 24x36 | 82.59 | 41.29 |
| 30x30 | 83.59 | 41.79 |

JOIN OUR EMAIL LIST
at artistanddisplay.com
RECEIVE MONTHLY
COUPONS
artistanddisplay.com



ARTISTANDDISPLAY 9015 WEST BURLEIGH MILWAUKEE 53222 414 **442-9100**
CELEBRATING 74 YEARS MON THRU THURSDAY 9-8PM ■ FRIDAY 9-6 ■ SATURDAY 9-5 ■ SUNDAY 12-4

MEMBER NEWS

Art by **Julie Bauhs, Jerome Glenn, Mark Kaufman, Lou Ann E. Petersen, Don Pierce, Heidi Porter, Don Pron and Beth Simmons** was on display at the Madison Christian Community in October. The exhibition was in conjunction with the Bayview Community Center Arts Bridge program.

Jean D. Sobon was awarded Best in Show, Milwaukee Area Teachers of Art Membership Exhibition. Sobon also received the Windhover Foundation Best in Show award in the Milwaukee Area Teachers of Art 2010 Membership Exhibition. At the 100 East Building, Milwaukee.

In August **Susan Atkinson** was honored with the best of show award at the Waupaca Community Arts on the Square Event.

Betsy Popp has had two landscape oil paintings included into the second Top 100 of the Paint the Parks competition. Popp has also been accepted into the Oil Painters of America. Popp also had three oil paintings included in the full color hard cover exhibition book for the Richeson 75: International Figure/Portrait 2010 Art Competition. Popp also received an Award of Excellence and an Honorable Mention in the Wisconsin Visual Arts Guild exhibit - 'Lighter Than Air' at Marshfield Clinic.

Carolyn Rosenberger presented a workshop on watercolor and rice paper for the Wisconsin Regional Artists Program at Water Street Arts in Rothschild and at the Rural Rembrandt Club of Wautoma in Wautoma.

Jeb Prazak is leading a workshop titled Painting Anything in Acrylics November 20 - 21 in Mineral Point. Registration deadline is Monday, November 15. Discover why no one subject is any more difficult than another to paint.

The computer can be an artist's best friend. **Kris Parins**, a painter and former graphic designer will show how to use your digital camera and computer to increase your creative options in the class Jump-Start your Watercolor Painting with Technology November 3 - 5, at St Elizabeth Seton Green Bay. For more information contact Contact Ron Lorberblatt rongrby@att.net 920-499-5986

Theresa Drinka participated in the Hidden Studios Art Tour in October

Heather Denson and Tamara Tsurkan showed work in the Madison Area Open Art Studios Studio event in October. Tsurkan also participated in the at the ArtFest in Middleton in August.

Laura Nelke led a 2 day workshop in Colorado Springs focusing on the representation of water, both quiet and dramatic.

Jean Accola participated in the Fresh Art Tour in October.

Robert Maynard's painting, "Blue Hair - From the Land" was awarded second place in the Hair for Charity art show in Waukesha. Maynard's paintings will be on display from December through February at the Department of Health Services, 1 West Wilson in Madison.

Diana Randolph had a pastel painting included in the 4th Annual Horizontal Grandeur Juried Art Exhibition at the Stevens County Historical Society & Museum in Minnesota. This is a juried art show depicting and celebrating prairies. Bill Holms' essay titled Horizontal Grandeur is the inspiration for this juried fine art show.

Mary Ann Carter participated in the 29th Annual Artstreet Art Fair in August in downtown Green Bay. Carter's work was accepted in the 66th Art Annual Juried Exhibition at the Neville Public Museum in Green Bay. This show is open to artists currently residing in counties in WI and MI and runs until Nov. 7.

Carolyn A Rosenberger participated in the Visions XII Exhibit this summer at the Riverfront Arts Center in Stevens Point. The Rural Rembrandt Club of Wautoma is hosted an exhibit of twenty-one of Carolyn Rosenberger's watercolors at the Wild Rose Public Library this summer. Rosenberger and **Roberta Scherrer**

participated in the 2010 WEA Art Showcase. The WEA exhibit showcases the talents of art educators from across the state.

Jayne Reid Jackson participated in the 20th Annual Remarkable Women Show 2010 at Peltz Gallery in Milwaukee. Jayne Reid Jackson is showing in THENOW: Contemporary Prints/Historical Perspectives which closes November 11 at the Katherine E. Nash Gallery in Minneapolis. This is an invitational print exhibition being held in conjunction with the (Mid-America Print Council)MAPC 2010 Biennial Conference "New World/Old World" Minneapolis, Minnesota

Christine L Style also took part in a Mid American Print Council Members Juried Exhibition titled New World/Old World. The show featured dialogues between eras and technologies.

Roberta Scherrer will be exhibiting in the art annual at the Neville Public Museum until November 7. This show is open to artists living in northeast Wisconsin and upper Michigan. Scherrer also had three works exhibited in the fourth annual women's show, entitled, Following Her Heart. This show, open to all women 18+, working in all mediums, was at the Hang Up Gallery in Neenah.

David A. Sear was juried into the 2010 Hidden River Art Festival in

Continued on page 6.

MUSEUM OF WISCONSIN ART ACQUIRES WORK BY EVELYN PATRICIA TERRY



Watermelon Slice, by Evelyn Patricia Terry, pastel

Evelyn Patricia Terry's pastel "Watermelon Slice," was acquired by the Museum of Wisconsin Art along with the artwork of 24 other artists from the MillerCoors Collection including works by Jean Crane, John Colt, Warrington Colescott, Peggy Thurston Farrell, Francisco X. Mora, Frances Myers, Robert von Neumann, Howard Schroeter, Helmut Summ, Arthur Thrall and Tom Uttech. The new acquisitions were unveiled at a special MillerCoors/MWA reception in August at the MWA. The exhibition "A Case of Wisconsin's Finest: New Art Acquisitions from the MillerCoors Collection" is on view until December 30.

Also on view at the museum is Terry's "Pandora's Box: The Very Nice Kid and Life Is." This pastel is a 2008 acquisition presently included in a year-long exhibition, "170 Years of Wisconsin Art," which chronologically commemorates MWA's collection. This show is up until January 2, 2011 in the lower galleries. Terry has artwork in over 400 private, public and corporate collections, internationally, in addition to the collections of the Haggerty Museum at Marquette University and the Milwaukee Art Museum.

Visit the Museum of Wisconsin Art at 300 S. 6th Avenue, West Bend, WI 53095 open Tuesday - Sunday. The museum can be reached at 262.334.9638 or www.wisconsinart.org.

CHRISTINE BUTH FURNESS AT WATERCOLOR WISCONSIN



Step outside to hear the hail storm thaw
Watercolor, 26" x 20"
2010

This painting was shown in the Fall Wisconsin Watercolor Society exhibit at New Visions Gallery in Marshfield

Christine Buth Furness has work in Watercolor Wisconsin 2010 at RAM's Wustum Museum of Fine Arts in Racine. The show runs from December 12 through April 30, 2011

Buth Furness' recent shows include exhibiting in the Invitational exhibition of Taos National Signature members at the Millicent Rogers Museum in Taos, New Mexico and getting juried into the SWS 47th Annual Members Exhibit in Plano, Texas. Furness also showed 3 works this fall at the Walker's Point Center for the Arts in Milwaukee

Look for her work at www.chrisbuthfurness.com

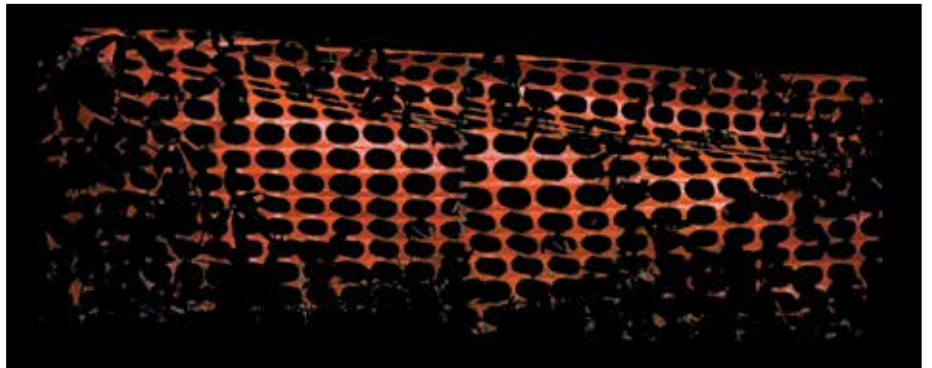


Sky in a box series: Yellow Tree and Aqua Blue, Watercolor, 22" x 30"

MORE WORK BY EDDEE DANIEL



Progress 1



Shroud



Reflection



Saving the Tree

FEATURED ARTIST HELEN KLEBESADEL



left: *Moccasin Flower Field*, watercolor, 24x22, 2010

right: *Vanilla Orchids II*, watercolor, 30x22, 2010



Helen Klebesadel's Knots, Braids, and Twinings will be on view until January 1, 2011 at the Wendt Commons Gallery, (608) 262-3493, 215 N. Randall Ave. in Madison

WVA PRESIDENT CHRISTINE STYLE

This issue of the WVA magazine marks my first as the new president of the WVA State Board. I welcome the opportunity to contribute to the visual arts in Wisconsin in this new role. I invite you to spread the word about the upcoming 2011 Wisconsin Biennial — it is open to all visual artists over 18 living in Wisconsin working in most any medium. The prospectus for this exhibit is in this issue. I invite members to link their websites to the WVA website and to update their information on our website. I also ask for your help in building the WVA endowment by inviting others you know who are supportive of the visual arts in Wisconsin to donate and help us reach our goal. Additionally, I invite those who are members to invite others to join us by applying for membership in one of our three WVA chapters. I thank the Wisconsin Arts Board for the partnership grant they have awarded WVA — their support helps keep this magazine alive. I look forward to working with all the WVA chapters, we are all volunteers working together



Mischievous Heart by Christine Style woodcut print with handcoloring, 22" x 16, 2010

to improve the visual arts in Wisconsin, network and exhibit with each other and communicate what we do as artists to others.

Thank you,

Christine Style stylec@uwgb.edu

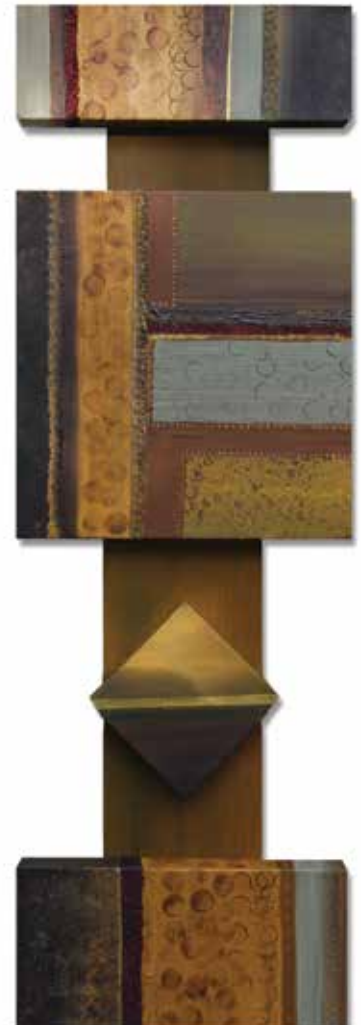
TAMARA TSURKAN EXHIBITS

Tamara Tsurkan has whimsical and contemporary paintings at the Department of Health Services Gallery 1 West Wilson in Madison until November 30. She also recently showed at The Gardens Gallery in Madison.

Tsurkan is also in the show "Wonderland" from November 1 - December 5 with a reception Friday, November 5, 5-9pm at Absolutely Art, 2322 Atwood Ave. in Madison

Tsurkan's art can be found at www.art-by-tamara.com.

Resonance by Tamara Tsurkan



ART AFTER DEATH: ESTATE PLANNING FOR ARTISTS

by Tony Rajer - *The Business of Art*

What and how you do before you die with your art estate is critical for the longevity of your personal artistic vision to survive. Death is the final act in anyone's life and for the artist it also represents the end of art production. What happens to your art when you die? Who gets what? Plans for who manages it, promotes and cares for it need to be decided before you die, otherwise lawyers, courts, dealers and your relatives or friends will decide. Your art is your legacy. Many artists just don't care, but others do. Many works of art can end up in the dumpster.

What is your art worth? We live in a disposable society. Who do you want your art to go: family, museums, non-profit organizations, dealers? Do you have a will and does it clearly state who should get what? Even a simple will can clarify things. Have you been involved in estate planning? You need to. All of these things need to be decided before you die. An artist can will their estate to anyone they wish to. If they are married, a spouse might receive the estate and can give items away, but estate lawyers and the IRS will wish to know the value of the items, especially the art.

Speak with your accountant about this matter. If you have a relationship with a museum or non-profit organization, approach them to discuss if they might wish to receive certain items from your estate such as archives, photographs or certain works of art. Rarely will a museum accept an entire estate. If they do, they will probably want a sum of money to go along with the donation to cover processing and preservation. These choices cost money -- so if you want your work be saved and kept as a collection of even a few pieces, you must make formal arrangements before your death.

Major artists like Andy Warhol set up foundations during their lifetimes to handle these questions and deal with their artworks after death. Most artists simply leave their estate to the closest relative. Also keep in mind that spousal partners, if not bound by law, generally do not inherit an artist's estate. It goes to a blood relative, though a good lawyer might successfully argue otherwise.

Dream Studio and Gallery

For Sale in northern Wisconsin, with living space and acreage.

Full details on-line at www.riverrunarts.com or call 715-277-4224 for information.

Continued from page 3

September at the Wilson Center for the Arts in Brookfield. Last year, a jury panel selected his artwork to represent the 2010 Eddy Award.

The show Impressions of an Artist with works by **David Kapszukiewicz** will be at Wild Apple Glass Studio & Gallery, 210 Main Street, Menasha until November 27. Call the gallery at 920-886-6636.

The show "A look at the year ahead" runs from November 29 until January 3, 2011 with a reception Friday, December 31 at 10pm. "A look at the year ahead" will feature all seven artists who will be exhibiting at Wild Apple in 2011. 4-5 works from each artist will be on view the month of December. The show will conclude with a New Years Eve Party at Wild Apple Glass Studio & Gallery

The show It's All Relative, A mother/daughter art exhibit by **Kathy and Megan Armstrong** will be on view until November 14 at the Monona Library

Connie Glowacki had work in the Door County Art League Exhibit in the Link Gallery at the Door County Auditorium.

The following artists had work in the Wisconsin Watercolor Society Fall Exhibit at New Visions Gallery in Marshfield: **Connie Glowacki, Christine Butch Furness, Shirley Gruen and Laura Nelke**

Patricia Keller showed in Here And Now And Then a show of Recent works by UW-Madison Department of Art alumni at the Art Lofts Gallery in Madison.

Textile artist **Barbara Schneider's** exhibit Summer's End was at the Arboretum Visitor Center in Madison.

Cynthia Koshalek will have work at the Hilldale All Guild Art Show, November 6 - 7. Cynthia will be selling her Jewelry including her latest designs entitled "Botanicals". Koshalek will also be at WAAC Winterfest at the Monona Terrace, November 13 - 14. Koshalek is also in the Holiday Sale of Fine Arts and Crafts "From Our House To Yours", November 20 - 2. This show features twelve artists in a Historical Home at 166 N. Prospect Avenue, Madison. Hours are November 20, 10 - 5pm and November 21, 12 - 5pm.

The Verticality Series by **Mark Pflughoeft** will be on view September 21 - December 1 at the Promega Gallery in Fitchburg. Pflughoeft will be showing a selection of recent abstract acrylic paintings on varied painting surfaces. His works will be installed on the second floor of the Promega Gallery. The Promega Gallery is located on 5445 East Cheryl Parkway two miles south of Highway 12/18 (Beltline) off Fish Hatchery Road.

Jeb Prazak and S.V. Medaris recently had a Show of Prints at the Artisan Gallery in Paoli.

Richard Quinney's work "Bearing Witness to a Family Farm" Photographs and field notes from the family farm in Walworth County is on view until February 12, 2011 at the Hoard Historical Museum in Fort Atkinson.

Lee Weiss' solo show Recent Watercolors was on view at this fall at Fanny Garver Gallery in Madison

Susan Young and CathyJean Clark had work accepted into the Northern National Art Competition at Nicolet College in Rhinelander.

Diane Arenberg had three works accepted into the Pastel Society of New Mexico National Juried Exhibit at the Hispanic Arts Center in Albuquerque,

New Mexico. Diane is a signature member of the Pastel Society of New Mexico and a part time resident of Santa Fe.

Alayna Rose has work at the David Barnett Gallery in Milwaukee until January 15, 2011. Also on view at the David Barnett Gallery in Milwaukee are prints & drawings from Rembrandt to the Present. This show runs from January 21 - April 9, 2011. The reception will be Friday, January 21, 2011 5-9 pm. The David Barnett collection of more than 4,000 original prints and drawings started in 1968 on buying trips to New York, London and Paris. David Barnett Gallery is located on 1024 E. State St. at Prospect Ave in Milwaukee

Virgi Driscoll showed new paintings and drawings this summer at the Cedarburg Cultural Center

The 90 Day Lawn Ornament a site specific outdoor sculpture/installation is on display at Cardinal Stritch University, 6801 N Yates Rd, Fox Point, Milwaukee. This work can be seen through December 1. The work is near the west parking lot for the Joan Stein Art Center.

Shirley Gruen had a painting, included in the Cedarburg Artists' Guild annual fall juried show at the Cedarburg Cultural Center. The theme was "Everything Green."

Kitty Lynne Klich, member of the Visual Art Gallery of Sheboygan, exhibited several new pieces of artwork, along with other members of VAGO, at Art's Display at 721 Riverfront Dr, in Sheboygan.

Judith Reidy as part of the Wisconsin Pastel Artists is also featured in the exhibit "The Times They are a Changin'" until November 28 at Griffin Gallery Fine Art LLC in Oconomowoc. Call the gallery at (262) 567-1826. Reidy will also be among the featured students of Adolf Rosenblatt at the Rosenblatt gallery beginning in October going through the end of November. The gallery is on 181 N Broadway (2nd floor, over Artasia) in Milwaukee. Reidy received an Honorable Mention at the Pewaukee Plein Air Event.

A recent show at THE Fine Art Gallery titled "TRANSFORMATIONS" featured works by **Dagmara Costello, Virgi Driscoll, Tom Eddington, J.J. Joyce, Marie Mellott, Gene Mihleisen, Tom Pscheid, Darlene Rzezotarski, Jean D. Sobon and Robert Popp**

S.V. Medaris is in the 35th Annual Birds in Art exhibition which is on view until November 14 at the Leigh Yawkey Woodson Art Museum in Wausau. This year's 35th annual exhibition features 115 juried artists from around the world (all works featuring "birds in art" hence the name). Medaris also participated in Contained a show of Recent artists' books by the Madison Bone Folder's Guild at Overture Center Gallery II in Madison.

Beki Borman's painting was selected for the 14th Annual "No Dead Artists" Exhibition at the Jonathan Ferrara Gallery in New Orleans.

The show **170 Years of Wisconsin Art** is up until January 2, 2011 at the Museum of Wisconsin Art in West Bend.

The recent show "Closer Look: Drawings by **Christina Roberts**" was on display at the Thrivent Art Gallery in the Mosquito Hill Nature Center East of New London

Ed Janecek's Stone from Heaven - Iron and stone Sculptures were recently at River's End Gallery in Waukesha

Kay Brathol-Hostvet will have two pastel paintings in the Olbrich as Art Invitational Exhibit which runs January 16 - April 3, 2011. This annual exhibit

of artwork depicting or inspired by the gardens is at Olbrich Botanical Gardens 3330 Atwood Avenue in Madison, 608-246-4550. Brathol-Hostvet will also have several small pastel paintings in The Small Works show at Artisan Gallery in Paoli, 608-845-6600. The show runs November 5 - December 31st a reception Friday, November 5-9 pm. Gallery hours are Tuesday-Sunday, 10 am-5 pm. The reception will be Thursday, January 13, 2011 5-7 pm.

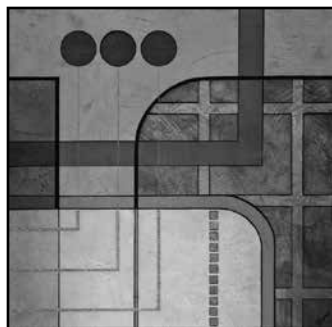
Cathy Jean Clark was invited to participate in the group exhibit Multiple Views of the Universe at Gallery 450, UW Marshfield Wood Co., Marshfield along with artists **Katherine Petke, Susan Wendlandt, Tessie Koch and Kitty Kingston.** Cathy Jean Clark also exhibited in Transferring Ink II, an exhibit which contrasts significant historical prints with contemporary prints at Fallbrook Art Center in Fallbrook, CA

Heather Denson will be in the Advertiser's Press Annual Fall Exhibit Saturday, November 6, 9am-1pm, 2222 Parview Road in Middleton. Denson also showed in the Fins & Feathers and Auction in DePere. Denson also participated in the Art at the Creek Exhibit Juried show in Pewaukee. The Heather Denson Studio-Gallery presents Stemware by Heather Denson & Acrylics by Becky Bushnell November 8 - December 31 at Heather Denson Studio-Gallery 4301 W. Beltline Hwy in Madison.

Laura J Nelke has work in the Wisconsin Visual Artists' Guild's fall show at the Reaching New Heights

Gallery in the Weston center of the Marshfield Clinic, Weston until December 7. Nelke also showed at the Jura Silverman Gallery in Spring Green in October.

Albin Erhart is showing a cross section of past work and new work that deals with world views, scriptures and with the Potawatomis in Southeast



Wisconsin at Mercy Hill Gallery in the Hide House, Bay View, 2625 S Greeley Street. The show runs through December 7

Ray Zovar has 6 paintings as part of the group show titled "Urbane: Portrait of a City" at Katie Gingrass Gallery, 241 N. Broadway Milwaukee, WI 53202 until December 31.

Brian McCormick's show of Watercolor landscapes is at Monroe Street Family Dental, 2702 Monroe Street in Madison (across the street from Knickerbocker Place.) until January 9, 2011. A watercolor painting by Brian McCormick was selected for the North East Watercolor Society's annual juried exhibition in Kent, Connecticut.

Liz Phillips showed at Katie Gingrass Gallery in Milwaukee this fall.

Anne C. Tedeschi showed work in the WRAA state show in Madison at the Pyle Center, UW-Madison.

Christopher Behrs is showing Pastel Landscapes at St. Mark's Episcopal Church Art Gallery 2618 North Hackett Avenue in Milwaukee until November 5.

Ann Thering showed photography of butterflies in the Spring Green Public Library in October.

Michael A. Reinkell recently showed nature and contemporary photographs in the NWTC Art Gallery.

Riverside Studio Painters will be exhibiting artwork at the Northeast Wisconsin Technical College Art Gallery until November 18.

Dave Tilton is participating in "Constructed Territory" a national juried thematic exhibit at the Robert & Elaine Stein Galleries at Wright State University in Dayton, OH, on view until January 9, 2011. Tilton's work was also selected for "PINNACLE" a national juried exhibition at the Foster Tanner Arts Center at Florida A&M University in Tallahassee, FL. Tilton's work was also selected for Bauhaus-Inspired Photography an international juried exhibit held in conjunction with Filter Photo Festival in Chicago, IL.

Betsy Popp had 2 works published in Wild Wings 'Original Catalog'. Betsy exhibited at the Fall Festival Wildlife Art Show & Sale at St. Mary's of the Lake Catholic Church in Lake City,

MN

Kathleen Eaton exhibited her work at the August Art Walk in Downtown Oshkosh

Kris Parins will be included in the Watercolor Artist Magazine annual feature "Ones to Watch", in the December 2010 issue on newsstands in late October. Parins had a painting accepted into the 25th Annual National Exhibit, Watercolor Wyoming at the SAGE Gallery in Sheridan Wyoming. She is a signature member of the Wyoming Watercolor Society.

Mel Kolstad and Susan Fiebig are in "Exposure", the introductory exhibit of the newly-formed Fond du Lac Visual Arts. This show runs until November 24 at the Windhover Center for the Arts- Cafe Gallery (downstairs), 51 Sheboygan Street in Fond du Lac.

The show **Conversations in Stitch** at the Anderson Art Center, 121 66th Street, Kenosha, 262-653-0481. The show runs from January 23 - March 20, 2011. The reception is Sunday, January 23, 2011 1:30 - 4:00 PM

IN MEMORY

Barbara Essock lost her husband Bob on September 11th. Barb Essock says of her late husband "Bob was as much an artist in his photography... He always supported me in my artistic endeavors and he was a colorful spirit in my life."

Don Sylvester lost his wife Lenore this fall.

JOIN



Wisconsin
Visual Artists

NAME _____

ADDRESS _____

CITY _____ STATE _____ ZIP _____

PHONE _____ E-MAIL _____

WEBSITE _____

MEDIA (if applicable) _____

WVA member benefits include:

- Subscription to Wisconsin Visual Artists quarterly magazine
- Opportunities to enter juried WVA chapter and statewide exhibitions
- Valuable programs and chapter meetings
- Your website linked to www.wisconsinvisualartists.com
- Opportunities to network

Mail this form along with 8-10 JPG images or slides, or the URL of your website and a current resume.

Supporting and renewing members need not send images

Joint Household Membership (\$15 discount offered for sharing mailings)

Mail to the nearest membership chair

Terry A. Fischer
23620 7 Mile Rd
Muskego WI 53150

Lee Mothes
425 Dixon Street
Kaukauna, WI 54130

Nan Griffin
123 W. Washington Ave. #805
Madison, WI 53703

Note: Annual membership dues are paid in June. Dues for New members will be prorated on a quarterly basis. (i.e. New members joining after June 1 pay full rate: \$40, those joining after Sept. 1 pay \$30, after Dec. 1 \$20, and after March 1 \$10)

MEMBERSHIP CATEGORIES

- PROFESSIONAL (\$40)**
For the artist with an established resume
- ASSOCIATE (\$40)**
For the artist who seeks opportunities to strengthen his/her resume
- STUDENT (\$30)**
For the artist who is pursuing an art degree

FINANCIAL SUPPORTERS

| | |
|-------------|-----------------|
| Benefactor | \$1,000 or more |
| Patron | \$500 |
| Sustainer | \$300 |
| Contributor | \$150 |
| Donor | \$80 |
| Friend | \$40 |

For the person, institution, business, or gallery wishing to support the arts in Wisconsin



Wisconsin Visual Artists
Formerly Wisconsin Painters & Sculptors
1008 Emerald Street
Madison, WI 53715



This publication is supported in part by a grant from the Wisconsin Arts Board with funds from the State of Wisconsin.

EDDEE DANIEL - INSIDE/OUTSIDE



Inside/Outside: An invitational collaborative installation; Eddee Daniel and Phil Krejcarek

October 24 - December 15,
Reception Sunday, October 24, 2-4 pm

This collaborative installation combines symbolically functional construction fences with functionless ladder-like forms. Conceptually, it is a response to aesthetic relationships and tensions created by construction activities.

The Lynden Sculpture Gardens, *Off Season*
2145 W. Brown Deer Rd.,
Milwaukee, WI

More work by Eddee Daniel can be seen at:
www.eddeedaniel.com.

see more work on page 4